

Za tehnično podporo ali pomoč pokličite
090-6009



Motorola DS4208 Quick Start Guide

Več informacij: <http://www.info-kod.si>

Vprašanja? Kontaktirajte naše strokovnjake



090-6009



servis@info-kod.si



<http://www.info-kod.si>

Ponedeljek – Petek od 9:00 do 15:00

DS4208

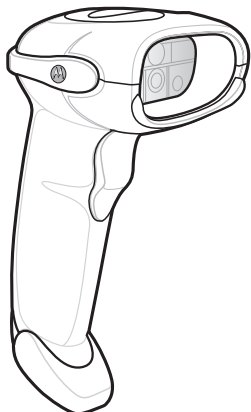
Quick Start Guide



<http://www.motorola.com/ds4208>

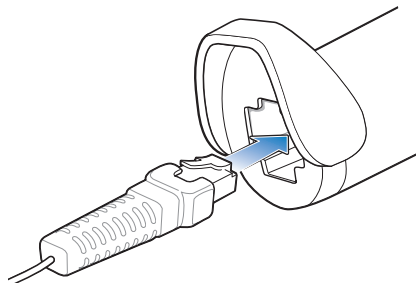
STEP 1 - ATTACH CABLE TO SCANNER

POST IN WORK AREA

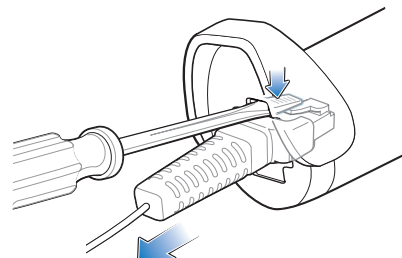


See Product Reference Guide for detailed information

Attach Cable



Remove Cable (to change interface)

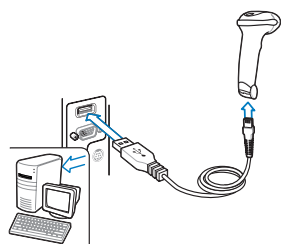


Note: An audible click sounds when the shielded cable is inserted correctly.

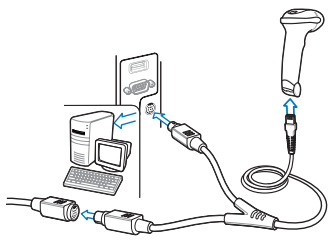
STEP 2 - CONNECT CABLE TO A HOST

NOTE: Cables may vary depending on configuration.

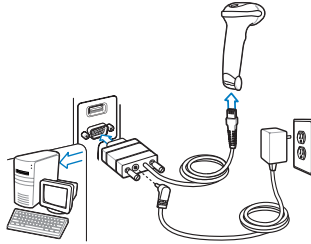
USB



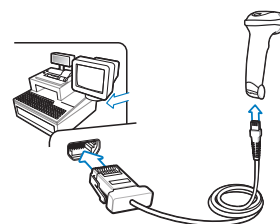
Keyboard Wedge



RS-232



IBM 46XX



STEP 3 - SET UP INTERFACE (Scan Host Bar Codes)

Important: Out of box, RS-232 and USB interfaces require no bar code scan setup. Bar codes are provided for complex programming or interface changes.

USB

Scan **ONE** of the bar codes below



IBM HAND-HELD USB



HID KEYBOARD EMULATION



Symbol Native API (SNAPI) without Imaging Interface

Keyboard Wedge

Scan **ONE** of the bar codes below



IBM AT Notebook



IBM PC/AT and IBM PC COMPATIBLE

RS-232

Scan **ONE** of the bar codes below



OPDS/JPOS



STANDARD RS-232

IBM 46XX

Scan **ONE** of the bar codes below



PORT 5B



PORT 9B

ADD AN ENTER KEY (CARRIAGE RETURN/LINE FEED)

To add an **ENTER** key after scanned data, scan all **THREE** bar codes below in numerical order.

1



SCAN OPTIONS

2



<DATA><SUFFIX>

3



ENTER

ADD A TAB KEY

To add a **Tab** key after scanned data, scan all **THREE** Enter key bar codes above in numerical order then scan all **FIVE** bar codes below in numerical order.

1



SCAN SUFFIX

2



7

3



0

4



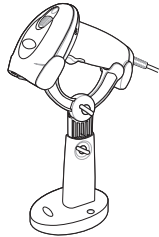
0

5



9

INTELLISTAND



SET DEFAULTS

Return to Factory Defaults



SET DEFAULTS

OPTIMUM SCANNING



123SCAN²

123Scan² is an easy-to-use, PC-based software tool that enables rapid and easy customized setup via a bar code or USB cable. For more information, visit: <http://www.motorola.com/123Scan2>.

SCANNER INDICATIONS

LED Indications

Standard Use

Off	Green	Red
Scanner is on and ready to scan, or no power to scanner	Bar code is successfully decoded	Transmission error

Beeper Indications

Standard Use

Low/medium/high beeps	Short beep	4 low beeps
Power up	Bar code symbol decoded (if decode beeper enabled)	Transmission error detected, data is ignored

Parameter Menu Scanning

High/low/high/low beeps	High/low beeps	Low/high beeps
Successful parameter setting	Keyboard parameter selected.	Input error; incorrect bar code, programming sequence, or Cancel scanned

Troubleshooting

Scanner not working

No power to scanner	Incorrect interface cable used	Interface/power cables are loose
Check system power; ensure power supply, if required, is connected	Ensure that correct interface cable is used	Ensure all cable connections are secure

Scanner decoding bar code, but data not transmitting to host

Scanner not programmed for correct host interface	Interface cable is loose
Scan appropriate host parameter bar codes	Ensure all cable connections are secure

Scanned data incorrectly displayed on host

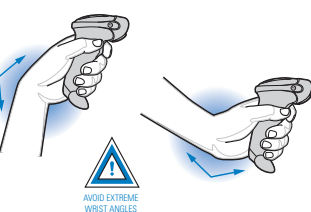
Scanner not programmed for correct host interface
Scan appropriate host parameter bar codes

Scanner not decoding bar code

Scanner not programmed for bar code type	Bar code unreadable	Distance between scanner and bar code incorrect
Ensure scanner is programmed to read type of bar code being scanned	Ensure bar code not defaced; try scanning test bar code of same bar code type	Move scanner closer to or further from bar code

RECOMMENDED USAGE GUIDE - OPTIMUM BODY POSTURE

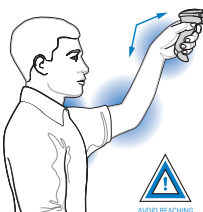
Avoid Extreme Wrist Angles



Avoid Bending



Avoid Reaching



Health and Safety Recommendations

Ergonomic Recommendations

Caution: In order to avoid or minimize the potential risk of ergonomic injury follow the recommendations below. Consult with your local Health & Safety Manager to ensure that you are adhering to your company's safety programs to prevent employee injury.

- Reduce or eliminate repetitive motion.
- Maintain a natural position.
- Reduce or eliminate excessive force.
- Keep objects that are used frequently within easy reach.
- Perform tasks at correct heights.
- Reduce or eliminate vibration.
- Reduce or eliminate direct pressure.
- Provide adjustable workstations.
- Provide adequate clearance.
- Provide a suitable working environment.
- Improve work procedures.

REGULATORY INFORMATION

© 2011 MOTOROLA, Inc. All rights reserved.

Motorola reserves the right to make changes to any product to improve reliability, function, or design. Motorola does not assume any product liability arising out of, or in connection with, the application or use of any product, circuit, or application described herein. No license is granted, either expressly or by implication, estoppel, or otherwise under any patent right or patent, covering or relating to any combination, system, apparatus, machine, material, method, or process in which Motorola products might be used. An implied license exists only for equipment, circuits, and subsystems contained in Motorola products.

Power Supply

Use ONLY a LISTED Motorola, Type no. PWRS-14000 (5.2Vdc, 850mA minimum), direct plug-in power supply, marked Class 2 or LPS (IEC60950-1, SELV). Use of alternative Power Supply will invalidate any approvals given to this unit and may be dangerous.

Warranty

For the complete Motorola hardware product warranty statement, go to: <http://www.motorola.com/enterprisemobility/warranty>.

Service Information

If you have a problem using the equipment, contact your facility's Technical or Systems Support. If there is a problem with the equipment, they will contact the Motorola Solutions Support at: <http://supportcentral.motorola.com>.

For the latest version of this guide go to: <http://supportcentral.motorola.com>.

Waste Electrical and Electronic Equipment (WEEE)

English: For EU Customers: At the end of their life this must be returned to Motorola. For information on how to return this product, please go to: <http://www.motorola.com/enterprisemobility>.

English: In Germany: In Deutschland: Dieses Produkt ist als elektrisches und elektronisches Gerät gekennzeichnet. Es ist als Abfall zu behandeln und darf nicht in den Hausmüll gegeben werden. Bitte wenden Sie sich an Ihren örtlichen Abfallwirtschaftsbetrieb für weitere Informationen. <http://www.motorola.com/enterprisemobility>

English: In France: En France: Ce produit est un appareil électrique et électronique. Il doit être traité comme un déchet et ne doit pas être jeté dans les poubelles. Pour plus d'informations, veuillez vous adresser à votre service de gestion des déchets. <http://www.motorola.com/enterprisemobility>

English: In Italy: In Italia: Questo prodotto è un apparecchio elettrico ed elettronico. Deve essere smaltito come rifiuto e non deve essere gettato nei rifiuti domestici. Per informazioni, rivolgersi al proprio servizio di gestione dei rifiuti. <http://www.motorola.com/enterprisemobility>

English: In Spain: En España: Este producto es un equipo eléctrico y electrónico. Debe ser tratado como residuo y no debe ser tirado a la basura. Para más información, consulte con el servicio de gestión de residuos. <http://www.motorola.com/enterprisemobility>

English: In Poland: W Polsce: Ten produkt jest urządzeniem elektrycznym i elektronicznym. Należy go odpowiednio utylizować i nie wyrzucać do zwykłych odpadów. Więcej informacji na temat recyklingu znajdą Państwo na stronie: <http://www.motorola.com/enterprisemobility>

English: In Czech: V České republice: Tento produkt je elektrické a elektronické zařízení. Musí být správně recyklováno a nesmí být vyhozeno do běžného odpadu. Pro více informací se obraťte na místní úřad pro životní prostředí. <http://www.motorola.com/enterprisemobility>

English: In Slovakia: V Slovenskej republike: Tento produkt je elektrické a elektronické zariadenie. Musí byť správne recyklované a nesmie byť vyhodené do bežného odpadu. Viac informácií nájdete na miestnej úrad pre životné prostredie. <http://www.motorola.com/enterprisemobility>

English: In Hungary: Magyarországon: Ez a termék elektromos és elektronikus berendezés. Helyesen kell kezelni és újrahasznosítani. Kérjük, forduljon a helyi hulladékkezelő hatósághoz további információkért. <http://www.motorola.com/enterprisemobility>

English: In Romania: În România: Acest produs este un echipament electric și electronic. Trebuie să fie gestionat corect și să nu fie aruncat în gună. Pentru mai multe informații, consultați serviciul de gestionare a deșeurilor. <http://www.motorola.com/enterprisemobility>

English: In Bulgaria: В България: Този продукт е електрическо и електронно устройство. Трябва да се рециклира правилно и не трябва да се изхвърля в обикновения отпадък. За повече информацията, моля, обърнете се към местните власти. <http://www.motorola.com/enterprisemobility>

English: In Greece: Στην Ελλάδα: Αυτό το προϊόν είναι ηλεκτρικό και ηλεκτρονικό. Πρέπει να ανακυκλωθεί σωστά και να μην πεταχτεί στα σκουπίδια. Για περισσότερες πληροφορίες, επικοινωνήστε με τις αρχές. <http://www.motorola.com/enterprisemobility>

English: In Turkey: Türkiye'de: Bu ürün elektrik ve elektronik alettir. Doğru şekilde geri dönüştürülmeli ve atılmalıdır. Daha fazla bilgi için lütfen yerel yetkililerle iletişime geçin. <http://www.motorola.com/enterprisemobility>

English: In Russian: В России: Данное изделие является электрическим и электронным оборудованием. Его необходимо утилизировать в соответствии с требованиями законодательства. Для получения дополнительной информации обратитесь к местным властям. <http://www.motorola.com/enterprisemobility>

English: In Ukraine: В Україні: Цей продукт є електричним і електронним пристроєм. Його потрібно правильно утилізувати, не викидаючи в сміття. Для отримання додаткової інформації зверніться до місцевих органів влади. <http://www.motorola.com/enterprisemobility>

English: In Belarus: У Беларусі: Гэты прадукт з'яўляецца электрычным і электронным апаратам. Ён павінен быць перададзены ў спецыялізаваны пункт прыёмкі і перапрацоўкі. Для атрымання большай інфармацыі звярніцеся да мясцовых улад. <http://www.motorola.com/enterprisemobility>

English: In Serbia: U Srbiji: Ovaj proizvod je električni i elektronički uređaj. Mora biti pravilno reciklovan i ne treba ga baciti u smeće. Za više informacija, obratite se na lokalne vlasti. <http://www.motorola.com/enterprisemobility>

English: In Montenegro: U Crnoj Gori: Ova oprema je električna i elektronička. Treba je pravilno reciklirati i ne smije se baciti u otpad. Za više informacija, kontaktirajte lokalne vlasti. <http://www.motorola.com/enterprisemobility>

English: In Bosnia and Herzegovina: U Bosni i Hercegovini: Ovo je električno i elektroničko opremanje. Mora biti pravilno reciklovan i ne treba ga baciti u otpad. Za više informacija, obratite se na lokalne vlasti. <http://www.motorola.com/enterprisemobility>

English: In Albania: Në Shqipëri: Ky produkt është elektrik dhe elektronik. Duhet të përdoret si mbeturinë dhe të riciklohet. Për më shumë informata, kontaktoni autoritetet lokale. <http://www.motorola.com/enterprisemobility>

English: In Macedonia: Во Македонија: Овао производ е електричен и електронски апарат. Треба да се рециклира правилно и не треба да се баца во отпад. За повеќе информација, контактирајте со локалните власти. <http://www.motorola.com/enterprisemobility>

English: In Bulgaria: В България: Този продукт е електрическо и електронно устройство. Трябва да се рециклира правилно и не трябва да се изхвърля в обикновения отпадък. За повече информацията, моля, обърнете се към местните власти. <http://www.motorola.com/enterprisemobility>

English: In Romania: În România: Acest produs este un echipament electric și electronic. Trebuie să fie gestionat corect și să nu fie aruncat în gună. Pentru mai multe informații, consultați serviciul de gestionare a deșeurilor. <http://www.motorola.com/enterprisemobility>

English: In Hungary: Magyarországon: Ez a termék elektromos és elektronikus berendezés. Helyesen kell kezelni és újrahasznosítani. Kérjük, forduljon a helyi hulladékkezelő hatósághoz további információkért. <http://www.motorola.com/enterprisemobility>

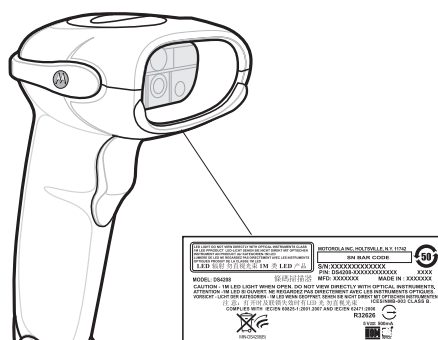
English: In Czech: V České republice: Tento produkt je elektrické a elektronické zařízení. Musí být správně recyklováno a nesmí být vyhozeno do běžného odpadu. Pro více informací se obraťte na místní úřad pro životní prostředí. <http://www.motorola.com/enterprisemobility>

English: In Slovakia: V Slovenskej republike: Tento produkt je elektrické a elektronické zariadenie. Musí byť správne recyklované a nesmie byť vyhodené do bežného odpadu. Viac informácií nájdete na miestnej úrad pre životné prostredie. <http://www.motorola.com/enterprisemobility>

English: In Poland: W Polsce: Ten produkt jest urządzeniem elektrycznym i elektronicznym. Należy go odpowiednio utylizować i nie wyrzucać do zwykłych odpadów. Więcej informacji na temat recyklingu znajdą Państwo na stronie: <http://www.motorola.com/enterprisemobility>

English: In Hungary: Magyarországon: Ez a termék elektromos és elektronikus berendezés. Helyesen kell kezelni és újrahasznosítani. Kérjük, forduljon a helyi hulladékkezelő hatósághoz további információkért. <http://www.motorola.com/enterprisemobility>

Scanner Labeling



Regulatory Information

This device is approved under Motorola, Inc. ("Motorola"). This guide applies to Model Number: DS4208. All Motorola devices are designed to be compliant with rules and regulations in locations they are sold and will be labeled as required. Local language translations are available at the following website: <http://supportcentral.motorola.com>.

Any changes or modifications to Motorola Technologies equipment, not expressly approved by Motorola, could void the user's authority to operate the equipment. Antennas: Use only the supplied or an approved replacement antenna. Unauthorized antennas, modifications, or attachments could cause damage and may violate regulations.

LED Devices

Complies with IEC/EN60825-1:2001 & IEC/EN62471:2006. For devices with Class 1M LEDs the following label is used:

Radio Frequency Interference Requirements - FCC

This device is approved under Motorola, Inc. ("Motorola"). This guide applies to Model Number: DS4208. All Motorola devices are designed to be compliant with rules and regulations in locations they are sold and will be labeled as required. Local language translations are available at the following website: <http://supportcentral.motorola.com>.

Any changes or modifications to Motorola Technologies equipment, not expressly approved by Motorola, could void the user's authority to operate the equipment. Antennas: Use only the supplied or an approved replacement antenna. Unauthorized antennas, modifications, or attachments could cause damage and may violate regulations.

Any changes or modifications to Motorola Technologies equipment, not expressly approved by Motorola, could void the user's authority to operate the equipment. Antennas: Use only the supplied or an approved replacement antenna. Unauthorized antennas, modifications, or attachments could cause damage and may violate regulations.

Any changes or modifications to Motorola Technologies equipment, not expressly approved by Motorola, could void the user's authority to operate the equipment. Antennas: Use only the supplied or an approved replacement antenna. Unauthorized antennas, modifications, or attachments could cause damage and may violate regulations.

Any changes or modifications to Motorola Technologies equipment, not expressly approved by Motorola, could void the user's authority to operate the equipment. Antennas: Use only the supplied or an approved replacement antenna. Unauthorized antennas, modifications, or attachments could cause damage and may violate regulations.

Any changes or modifications to Motorola Technologies equipment, not expressly approved by Motorola, could void the user's authority to operate the equipment. Antennas: Use only the supplied or an approved replacement antenna. Unauthorized antennas, modifications, or attachments could cause damage and may violate regulations.

Any changes or modifications to Motorola Technologies equipment, not expressly approved by Motorola, could void the user's authority to operate the equipment. Antennas: Use only the supplied or an approved replacement antenna. Unauthorized antennas, modifications, or attachments could cause damage and may violate regulations.

Any changes or modifications to Motorola Technologies equipment, not expressly approved by Motorola, could void the user's authority to operate the equipment. Antennas: Use only the supplied or an approved replacement antenna. Unauthorized antennas, modifications, or attachments could cause damage and may violate regulations.

Any changes or modifications to Motorola Technologies equipment, not expressly approved by Motorola, could void the user's authority to operate the equipment. Antennas: Use only the supplied or an approved replacement antenna. Unauthorized antennas, modifications, or attachments could cause damage and may violate regulations.

Any changes or modifications to Motorola Technologies equipment, not expressly approved by Motorola, could void the user's authority to operate the equipment. Antennas: Use only the supplied or an approved replacement antenna. Unauthorized antennas, modifications, or attachments could cause damage and may violate regulations.

Any changes or modifications to Motorola Technologies equipment, not expressly approved by Motorola, could void the user's authority to operate the equipment. Antennas: Use only the supplied or an approved replacement antenna. Unauthorized antennas, modifications, or attachments could cause damage and may violate regulations.

Any changes or modifications to Motorola Technologies equipment, not expressly approved by Motorola, could void the user's authority to operate the equipment. Antennas: Use only the supplied or an approved replacement antenna. Unauthorized antennas, modifications, or attachments could cause damage and may violate regulations.